

Video Intercom Reader Pro

The Openpath Video Intercom Reader Pro combines a built-in high resolution camera, intelligent intercom, and multi-technology reader into a slim and sleek form factor. Visitors use the intercom to initiate calls, communicate with assigned users, and are visually identified within the Openpath app. Automatically associate video footage with access events and visually monitor entries in the Openpath Control Center. The Video Intercom Reader Pro is a multi-technology reader that supports both low (125 kHz) and high (13.56 MHz) frequencies. The camera angle is adjustable during installation, ensuring optimal video footage.



Features

Works with any System

Easily integrates with legacy access control systems, logical software systems, and existing video systems via ONVIF-compliant platform

Touchless Reliable Access

Our patented Triple Unlock technology supports hands-free supports hands-free Wave to Unlock, mobile or watch app, tablet, HF and LF keycards, fobs, and Cloud Key

Video at the Door

Associate video with access events or alerts and visually monitor entries from the app or Control Center

Smart Intercom

Visitors can tell the Video Intercom Reader Pro the name of the person they're visiting, ask to speak to a receptionist, or leave a voicemail, all via the intercom's intelligent voice interface

Clear Calls

Two-way audio streaming with echo and noise cancellation lets you easily communicate with guests at the door

Easy to Install

Sleek mullion form factor is easy to mount and install with simple PoE connectivity and snap-in design

Cloud Security

Encrypted end-to-end communication, strong public key cryptography

Interoperability

Easily integrates with physical on-premise systems and logical software systems

Capacity Tracking

Track occupancy and enforce capacity limits with innovative BLE functionality

Monitoring

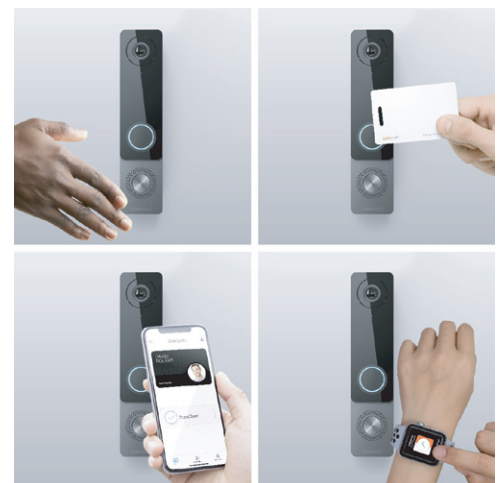
Built-in diagnostic and real-time troubleshooting insights

QR Code Directory

Generate and print a QR code to allow visitors to view building directory directly through their mobile browser.



Choose your way in



Video Intercom Reader Pro

Card Compatibility

- Openpath DESFire EV3
- MIFARE Classic/DESFire/Ultralight (ISO14443A) CSN
- Openpath Proximity
- HID® Proximity
- LenelProx®

Specifications

Cloud Managed	Yes
Form	Mullion
Color	Black
Frequency	125 kHz, 13.56 MHz
Openpath Bluetooth	Yes
NFC	Yes
Wave to Unlock	Yes
Auto Proximity Unlock	Yes
Image Sensor	1 / 2.5" 5MP CMOS
Resolution	5MP (2592 x 1944) recording at 25 fps
Video Compression	H.264, MJPEG
Bit Rate	CBR, VBR, MBR
Focal Length	2.8mm (F1.6)
Field of View	Horizontal: 109° Vertical: 81° Diagonal: 136°
Min. Illumination	Color: 2.5 lux B/W: 0.0 lux (IR LED on)
IR Range	9m (29.53ft)
Wide Dynamic Range	HDR (87dB)
Audio Streaming	Two-way, full duplex with echo and noise cancellation
Audio Input/Output	Built-in microphone array, omni-directional; Built-in speaker
Audio Encoding	G.711u, G.711a, G.726
Operating Temperature	-40°C (-40°F) to 50°C (122°F) Cold start -25°C (-13°F)
Storage Temperature	-40°C (-40°F) to 50°C (122°F)
Operating Humidity	Up to 90% RH non-condensing
Standards	ISO 14443A, Prox
Certification	FCC, UL 294, CE
Environmental	IP65
Bandwidth Range	Low (1MB), medium (2MB), high (8MB)

Operating and storage temperatures must not be exceeded.

Installation Options

- Surface mounted on wall
- Mounted on gang box
- Installed inside metal enclosure

Features

- High resolution built-in camera records entry activity
- Smart intercom interface supports multiple configurations
- Supports Openpath's Triple Unlock technology
- Can connect to third-party legacy access control panel
- Indoor/outdoor design
- NDAA/TAA compliant
- Five year warranty

Installation

- Easy install via a single Ethernet cable
- Wiegand Input/Output for third-party support

PIGTAIL color	Name	Description
Ethernet	--	RJ-45 connector
Black	GND	Wiegand RTN
Green	WD0	Wiegand Data 0
White	WD1	Wiegand Data 1
Blue/White Stripe	NO	Relay Normally Open
Orange/White Stripe	COM	Relay Common
Green/Yellow Stripe	GND	Ground (RTN)

Security

- Fully encrypted communication between mobile app and controller
- Fully encrypted communication between Openpath key cards and reader
- Eliminates the threat of copying or cloning Openpath key cards
- Includes tamper resistant secure storage

System Compatibility

- Video Intercom Reader Pro works with Openpath Access System including Openpath controllers, cloud management software, and mobile app
- Video Intercom Reader Pro works with legacy access control systems via Mobile Gateway option
- Video Intercom Reader Pro works with third-party VMS software via open video standards, including ONVIF and RTSP

Dimensions

- With Mullion bracket: 204 x 47 x 37 mm (8.02 x 1.85 x 1.45 in)
- With Standard bracket: 235 x 78 x 37 mm (9.25 x 3.07 x 1.45 in)
- Weight: 384 g (0.85 lbs)

Power Rating

- Input Voltage: 802.3af PoE (48VDC)
- Power Consumption: 10.8W

Video Storage

- Edge storage: 10GB eMMC (network failover recording)
- Cloud storage: 30, 60, 90, 180 plans available

Intercom Functionality

- Initiate and accept calls from the Control Center or Openpath app
- Subscription options available based on number of users
- Legacy SIP mode for VoIP calling

